

# Martin Luther King Junior Academy

25 October 2012

## K-8 Campus Planning



QUATTROCCHI KWOK  
ARCHITECTS



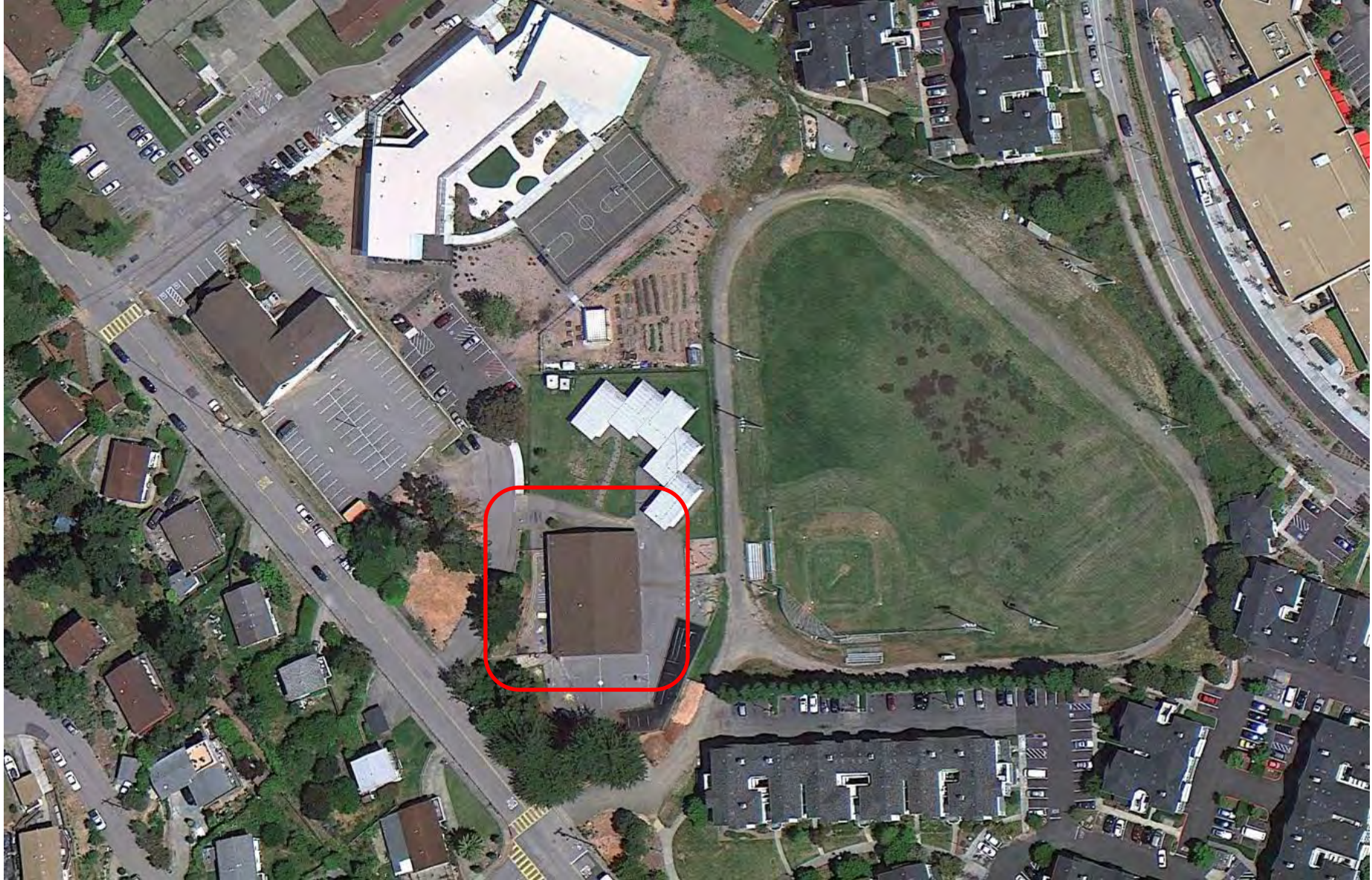
# Martin Luther King Junior Academy







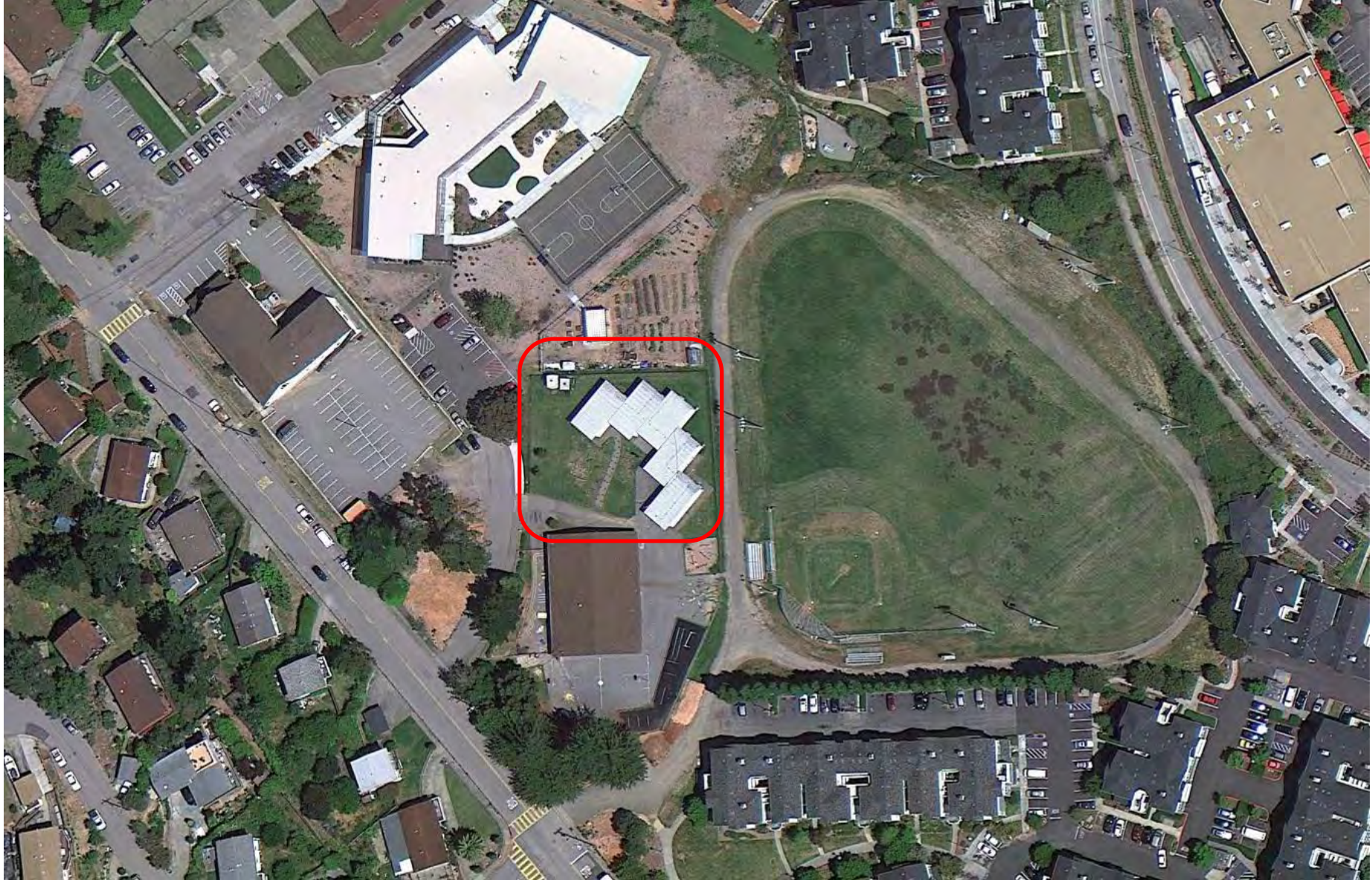
# Martin Luther King Junior Academy







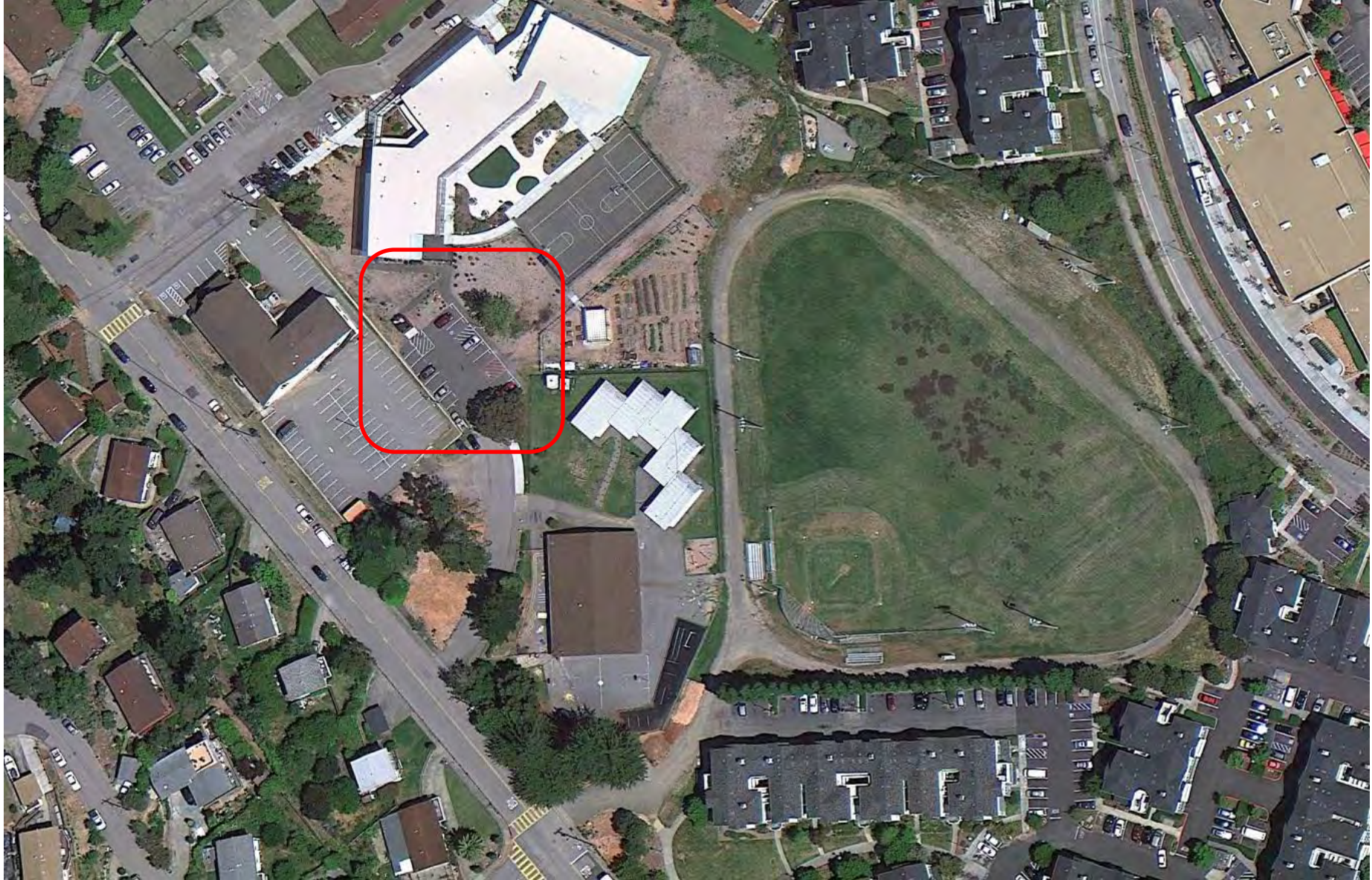
# Martin Luther King Junior Academy







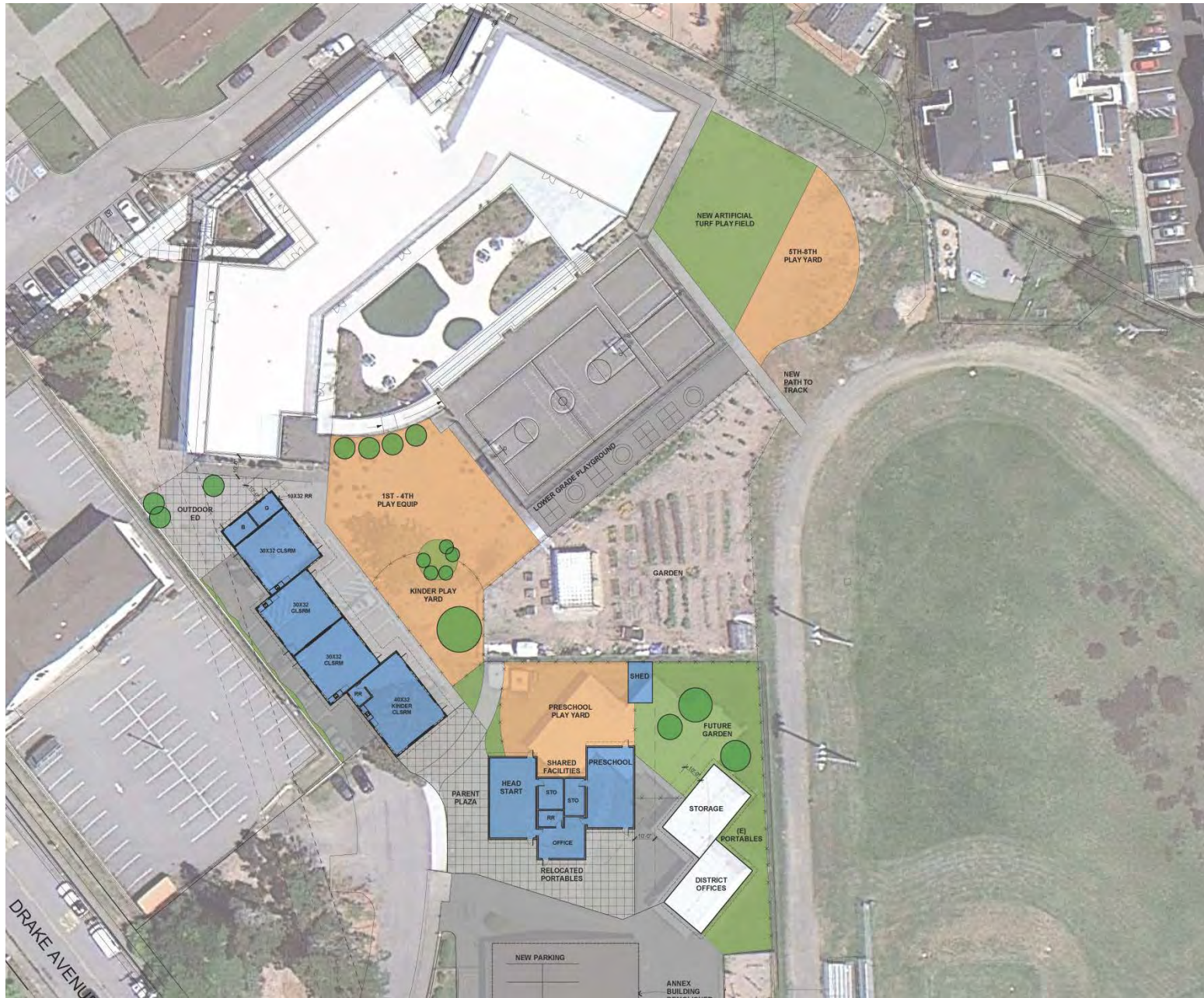
# Martin Luther King Junior Academy







# Martin Luther King Junior Academy







# Martin Luther King Junior Academy





# Martin Luther King Junior Academy







QUATTROCCHI KWOK  
ARCHITECTS

# Martin Luther King Junior Academy



Daylighting





# MLK New Classroom Project

| ID | Task Name                         | Duration        | Start               | Finish             | Aug | Sep | Oct | Nov | Dec | Jan | Feb | Mar | Apr | May | Jun | Jul | Aug | Sep |
|----|-----------------------------------|-----------------|---------------------|--------------------|-----|-----|-----|-----|-----|-----|-----|-----|-----|-----|-----|-----|-----|-----|
| 1  | <b>Governance</b>                 | <b>146 days</b> | <b>Thu 10/25/12</b> | <b>Thu 5/16/13</b> |     |     |     |     |     |     |     |     |     |     |     |     |     |     |
| 2  | Board Action Schematic Design     | 1 day           | Thu 10/25/12        | Thu 10/25/12       |     |     |     |     |     |     |     |     |     |     |     |     |     |     |
| 3  | Board Action Modular Contract     | 1 day           | Thu 12/13/12        | Thu 12/13/12       |     |     |     |     |     |     |     |     |     |     |     |     |     |     |
| 4  | Board Action Site Work Contract   | 1 day           | Thu 5/16/13         | Thu 5/16/13        |     |     |     |     |     |     |     |     |     |     |     |     |     |     |
| 5  | <b>Design and Approvals</b>       | <b>169 days</b> | <b>Mon 9/24/12</b>  | <b>Thu 5/16/13</b> |     |     |     |     |     |     |     |     |     |     |     |     |     |     |
| 6  | Programming                       | 10 days         | Mon 9/24/12         | Fri 10/5/12        |     |     |     |     |     |     |     |     |     |     |     |     |     |     |
| 7  | Schematic Design                  | 34 days         | Mon 9/24/12         | Thu 11/8/12        |     |     |     |     |     |     |     |     |     |     |     |     |     |     |
| 8  | Approval to Bid Modular Blds      | 1 day           | Thu 10/25/12        | Thu 10/25/12       |     |     |     |     |     |     |     |     |     |     |     |     |     |     |
| 9  | Prepare Modular Bid Package       | 10 days         | Fri 10/26/12        | Thu 11/8/12        |     |     |     |     |     |     |     |     |     |     |     |     |     |     |
| 10 | Bid & Award Modular Blds          | 30 days         | Fri 11/2/12         | Thu 12/13/12       |     |     |     |     |     |     |     |     |     |     |     |     |     |     |
| 11 | Adapt PC Drawings for DSA         | 35 days         | Fri 12/14/12        | Thu 1/31/13        |     |     |     |     |     |     |     |     |     |     |     |     |     |     |
| 12 | Develop Site Drawings             | 35 days         | Fri 12/14/12        | Thu 1/31/13        |     |     |     |     |     |     |     |     |     |     |     |     |     |     |
| 13 | DSA Submittal & Review Modulars   | 30 days         | Fri 2/1/13          | Thu 3/14/13        |     |     |     |     |     |     |     |     |     |     |     |     |     |     |
| 14 | DSA Submittal & Review Site       | 45 days         | Fri 2/1/13          | Thu 4/4/13         |     |     |     |     |     |     |     |     |     |     |     |     |     |     |
| 15 | Bid and Award Site Package        | 30 days         | Fri 4/5/13          | Thu 5/16/13        |     |     |     |     |     |     |     |     |     |     |     |     |     |     |
| 16 | <b>Construction</b>               | <b>186 days</b> | <b>Fri 12/14/12</b> | <b>Fri 8/30/13</b> |     |     |     |     |     |     |     |     |     |     |     |     |     |     |
| 17 | Notice to Proceed Modular Package | 15 days         | Fri 12/14/12        | Thu 1/3/13         |     |     |     |     |     |     |     |     |     |     |     |     |     |     |
| 18 | DSA Approval PC Set               | 1 day           | Thu 3/14/13         | Thu 3/14/13        |     |     |     |     |     |     |     |     |     |     |     |     |     |     |
| 19 | Factory Construction Modulars     | 60 days         | Fri 3/15/13         | Thu 6/6/13         |     |     |     |     |     |     |     |     |     |     |     |     |     |     |
| 20 | Notice to Proceed Site Package    | 15 days         | Fri 5/17/13         | Thu 6/6/13         |     |     |     |     |     |     |     |     |     |     |     |     |     |     |
| 21 | Mobilization                      | 1 day           | Fri 6/7/13          | Fri 6/7/13         |     |     |     |     |     |     |     |     |     |     |     |     |     |     |
| 22 | Demolition                        | 3 days          | Mon 6/10/13         | Wed 6/12/13        |     |     |     |     |     |     |     |     |     |     |     |     |     |     |
| 23 | Relocate Portables                | 2 days          | Thu 6/13/13         | Fri 6/14/13        |     |     |     |     |     |     |     |     |     |     |     |     |     |     |
| 24 | Building Pads                     | 2 days          | Mon 6/17/13         | Tue 6/18/13        |     |     |     |     |     |     |     |     |     |     |     |     |     |     |
| 25 | Foundations                       | 20 days         | Wed 6/19/13         | Tue 7/16/13        |     |     |     |     |     |     |     |     |     |     |     |     |     |     |
| 26 | Modular Install                   | 25 days         | Wed 7/17/13         | Tue 8/20/13        |     |     |     |     |     |     |     |     |     |     |     |     |     |     |
| 27 | Site Utilities                    | 15 days         | Wed 7/17/13         | Tue 8/6/13         |     |     |     |     |     |     |     |     |     |     |     |     |     |     |
| 28 | Site Concrete                     | 10 days         | Wed 7/31/13         | Tue 8/13/13        |     |     |     |     |     |     |     |     |     |     |     |     |     |     |
| 29 | Landscaping                       | 20 days         | Mon 8/5/13          | Fri 8/30/13        |     |     |     |     |     |     |     |     |     |     |     |     |     |     |
| 30 | <b>Occupancy</b>                  | <b>1 day</b>    | <b>Mon 9/2/13</b>   | <b>Mon 9/2/13</b>  |     |     |     |     |     |     |     |     |     |     |     |     |     |     |

